

escribe



escribe
the essential tool for body repair

delivering fully-researched



model specific repair methods for the safest and most efficient repair.

THATCHAM

PANEL STUDY

Thatcham Honda Civic 2006 - 5 Door Hatchback Bodyside Service Condition

Ref.	Description	Material	Service Condition
302(1)	A-Post Outer	Steel	Serviced as a separate panel, cut from bodyside front, less bolt on hinges
302(5)	A-Post Reinforcement	MS6	Serviced as a separate panel
302(6)	B-Post Outer	Steel	Serviced as a separate panel
302(8)	B-Post & Sill	Steel	Serviced as a separate panel, cut from bodyside front, less bolt on hinges
302(9)	B-Post Reinforcement	MS6	Serviced as a separate panel
302(13)	B-Post Reinforcement Lower	MS6	Cut from Sill/B-Post Reinforcement (Service condition information only, refer to illustration)
302(12)	Bodyside Front Section	Steel	Cut from Bodyside Front (Sill/CRP), removed less bolt on hinges (Service condition info only, refer to illustration)
302(1)	Door Inset	Steel	Serviced as a separate welded panel, less bolt on hinges
302(4)	Door Rear	Steel	Serviced as a separate welded panel, less bolt on hinges

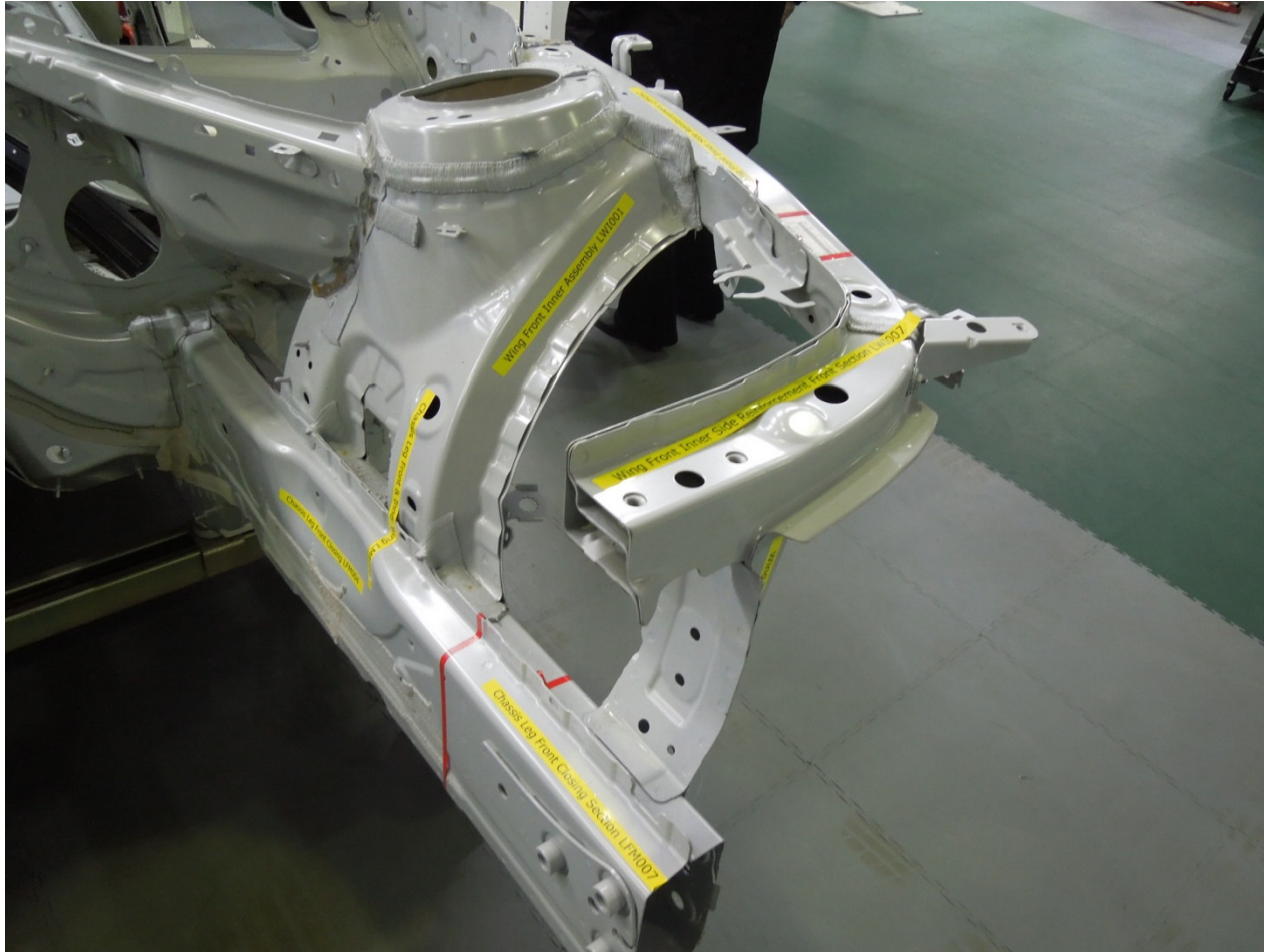
Thatcham METHODS

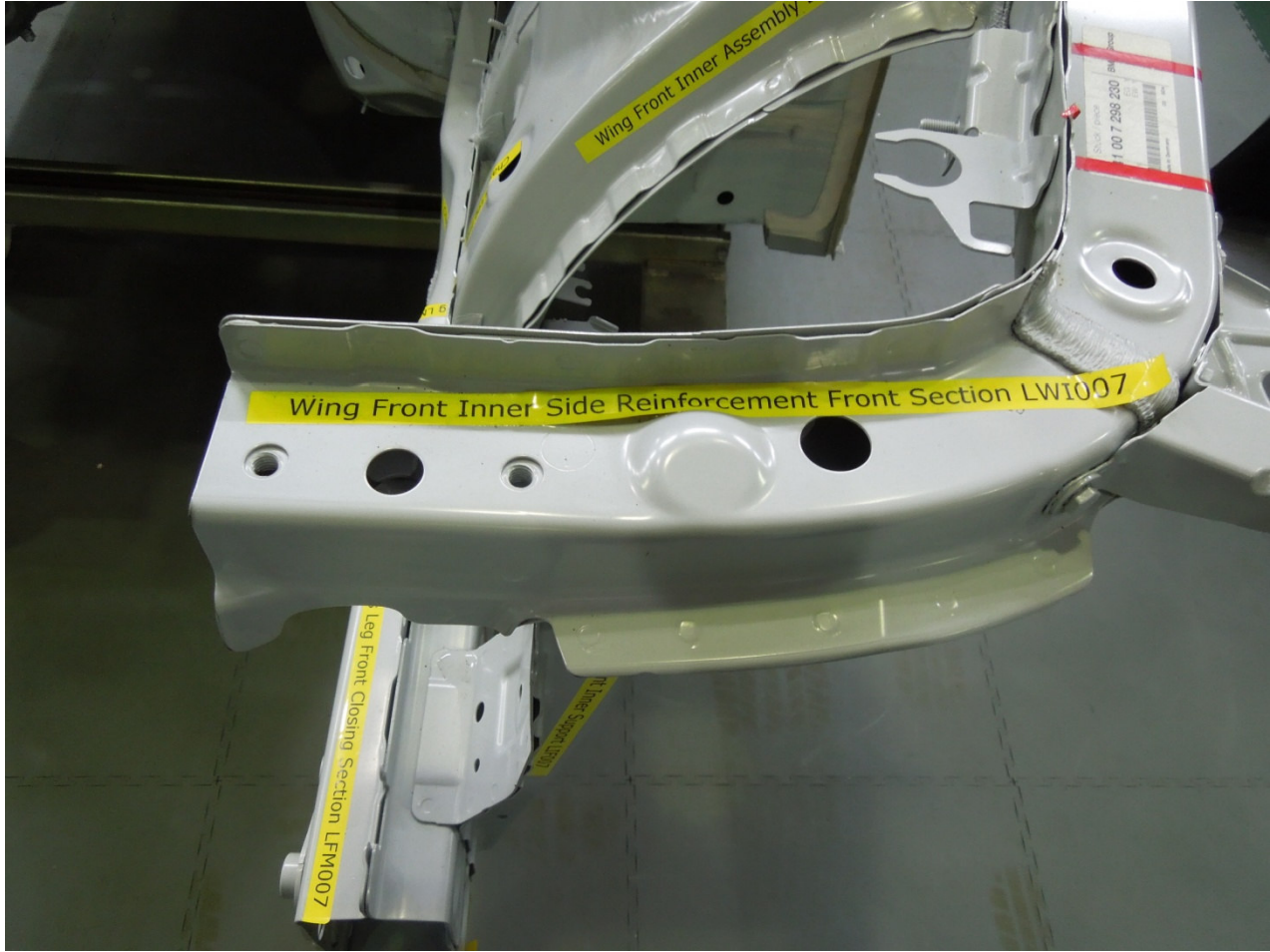
Thatcham Mechanical, Electrical and Trim (MET) methods explained

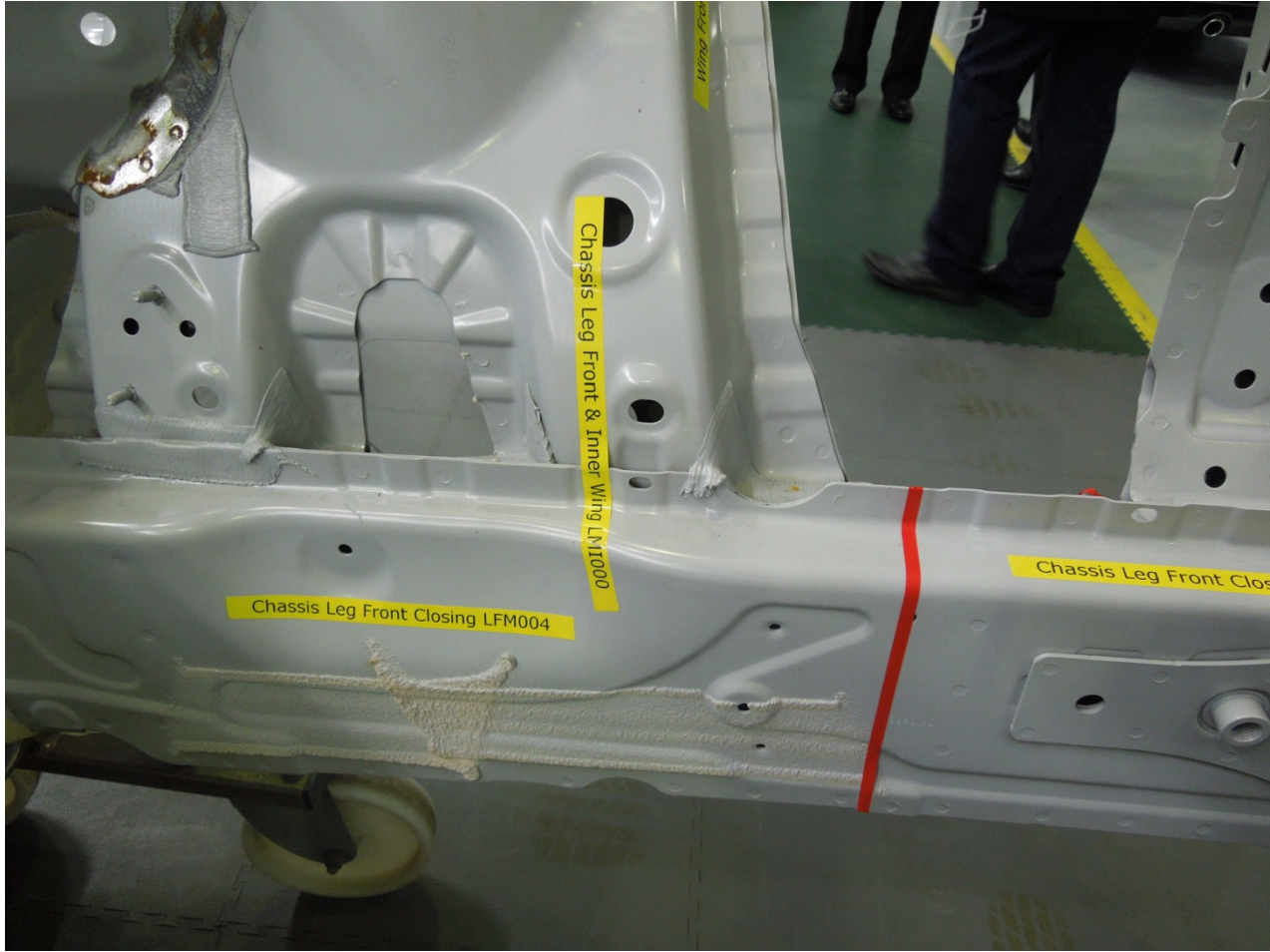
- Thatcham MET methods are displayed using a strip route table, additional information & torque settings paragraphs, component location and overview illustrations. Where required, additional information will also be displayed in detail with a diagram and explanation text box.
- The black tab at the top right hand corner of the page contains the title of the section. The orange tab at the top left hand corner of the page contains the title of the panel/component replacement.
- Each MET method page has a location diagram in the top left hand corner of the page to show the exact position of the panel/component being described and in some cases will show trim with numbered annotations relating to the strip route table.
- Below the location diagram will be an overview illustration where necessary. This will show the component concerned and how it is serviced e.g. a bumper may be shown with adjoining mouldings or trims which are serviced with the bumper.
- Situated in the centre of the page, 'Additional Information' relates to the strip route table, but may also refer to an additional diagram or illustration.
- Situated below 'Additional Information', 'Torque Settings' also relates to the strip route table and will provide information on manufacturer's or Thatcham's guide torque setting requirements.
- On the right hand side of every MET method presented is a strip route table. This table contains numbered 'action' phrases relating to the strip or removal of components necessary to carry out the panel replacement in question. If this strip route continues on the following page, a note at the bottom of the table will inform the user. The strip route is designed in strip order, and is reversed for vehicle removal. Any special procedures or operations, e.g. adjust headlamp aim, will always be positioned at the end of the strip route and will be drawn to the user's attention.
- When multiple methods are selected there may be some duplication within the strip routes, because of the unique way Thatcham create their methods. Duplication occurs when a collection of single panels are displayed, e.g. within a 'Bumper Front' method part of the strip route may repeat some headlamp method details.

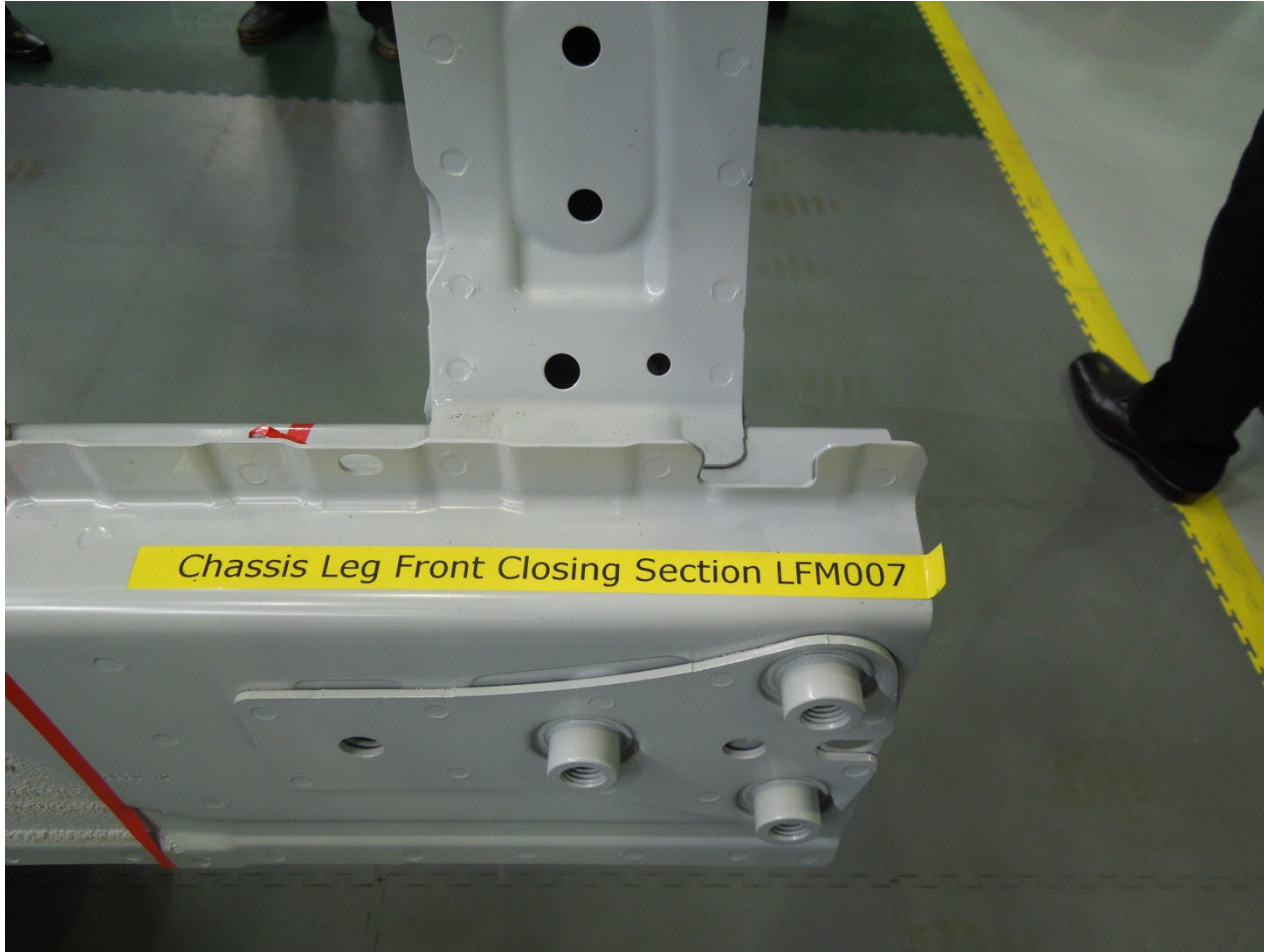


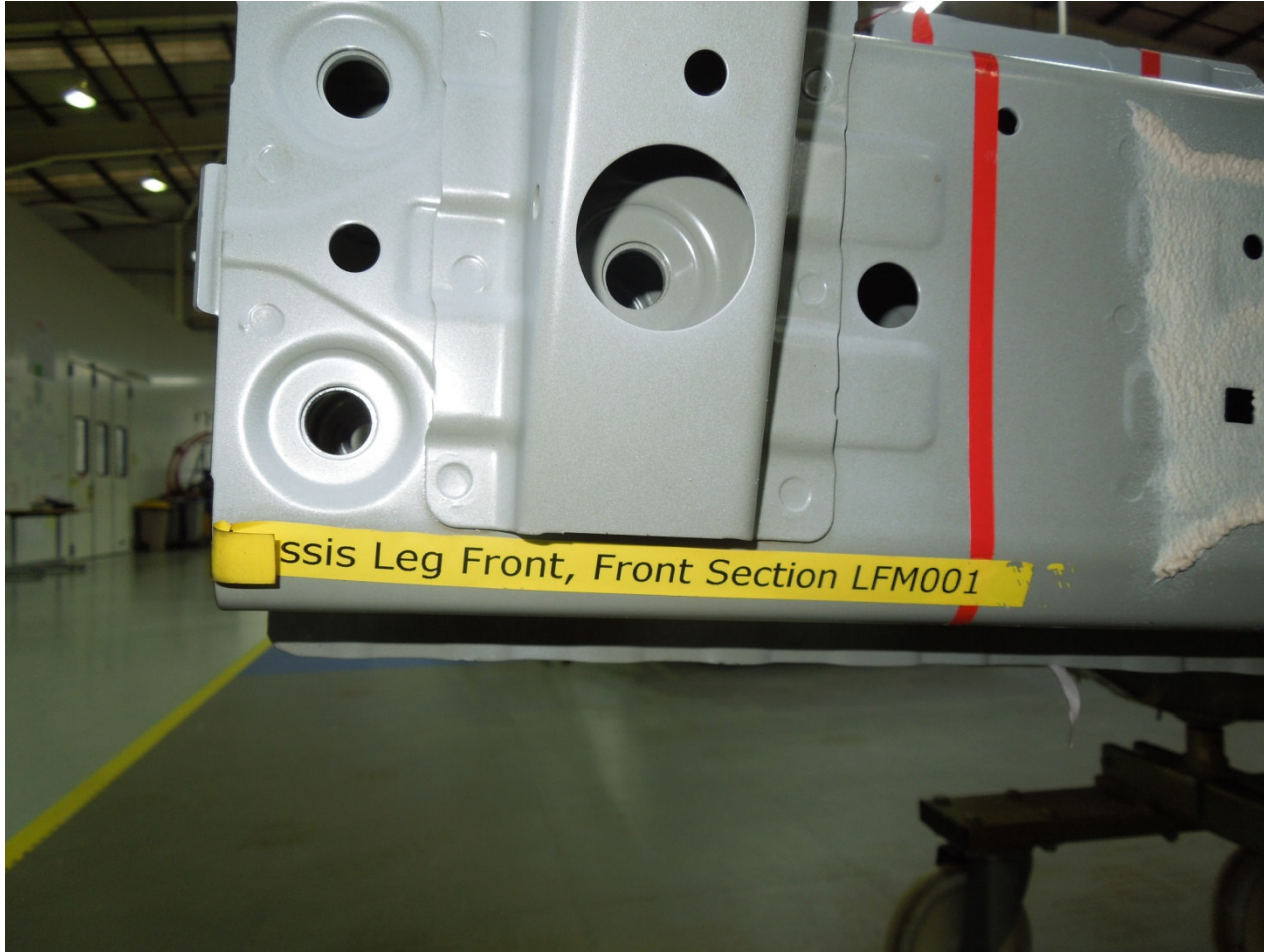




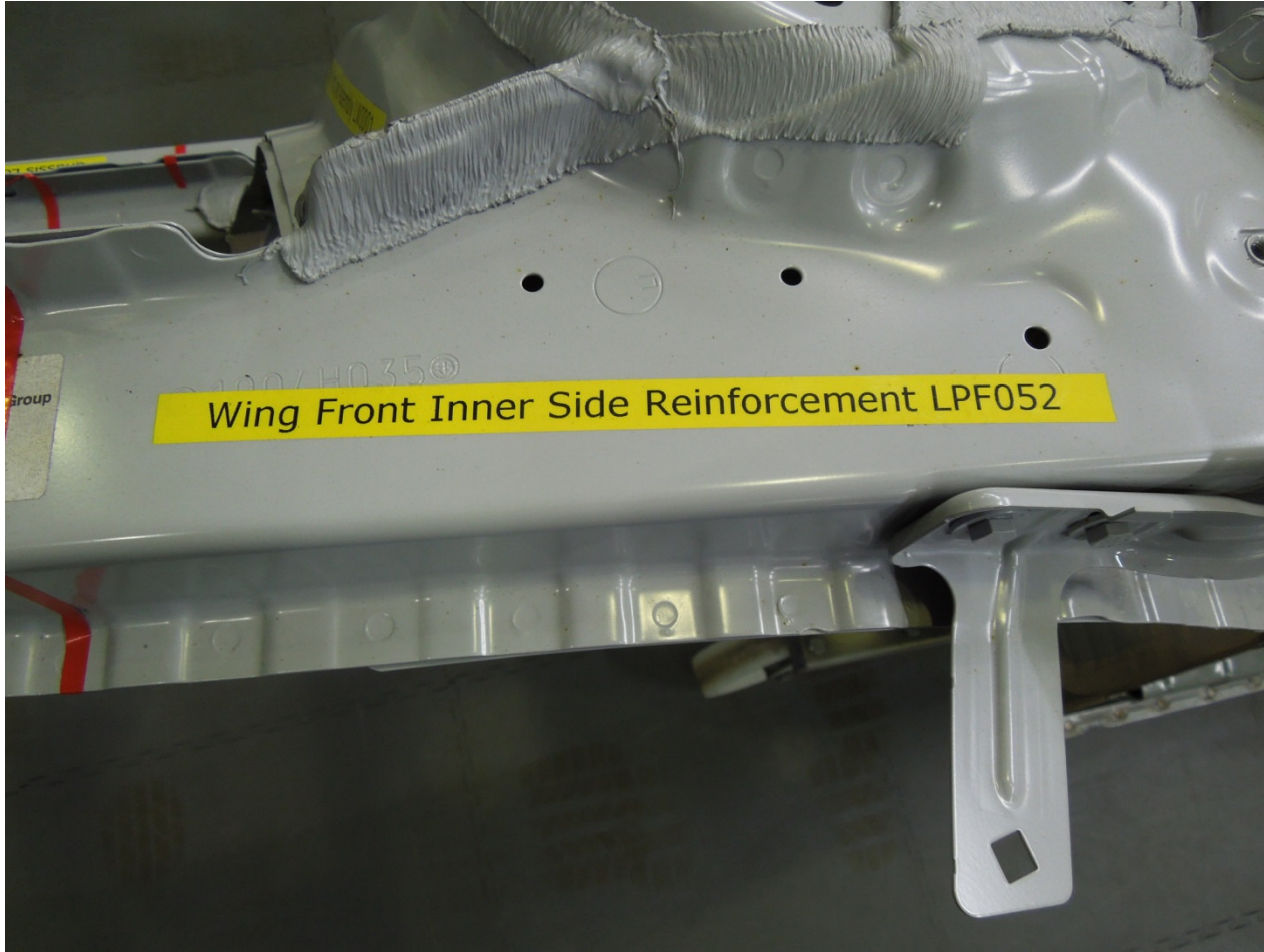












1007H035@
Wing Front Inner Side Reinforcement LPF052

group









